

## Programming



- Program or read meter settings
- Save meter profiles for cloning
- Use profiles for reporting

## Specifications

**System Requirements:** Windows® 95/98/ME/2000/XP

**Communications:** RS-232 Adapter or RS-422/485 Adapter

**Meter Address:** 00 - 99

**Reports:**

- Data logging: Save as HTML file format
- Configuration: Save as PDC file format, export to HTML, or print configuration

**Baud Rate:** 300 - 19,200 bps

**Configuration:** One meter at a time

### ORDERING INFORMATION

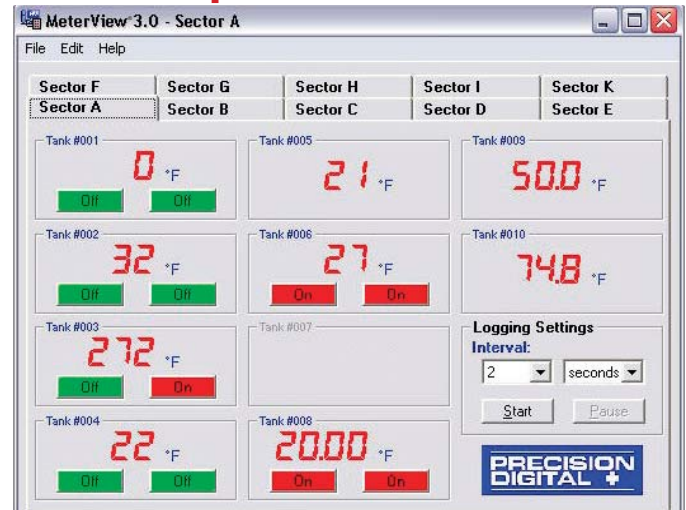
Model	Description	Number of meters
PDA7503-1	MeterView® 3.0	One
PDA7503-2	MeterView® 3.0	One to ten
PDA7503-3	MeterView® 3.0	One to one hundred

### Accessories

Model	Description
PDA7420	7' (2.1 m) Standard Modular Cable
PDA7232	RS-232 Serial Adapter (includes PDA7420)
PDA7422	RS-422/485 Serial Adapter (includes PDA7420)
PDA7485	RS-232 to RS-485 Converter
PDA7486	120 VAC/12 VDC Power Supply
PDA7487	DB25 to DB9 Adapter

Your local distributor is:

## Data Acquisition



- Save data to a file
- Monitor up to 10 meters per tab
- 10 tabs = 100 meter total capacity
- Acknowledge relays

## Sample Data Logging File

### PD765 Log File

Name: C:\MV3logfile.htm

Created: 2/26/2003 5:34:12 PM

Serial Port: COM 1

Connection speed: 2400 Baud

Logging rate:

1 update every 10 seconds

Date & Time	Tag Number	Address	Display	Units	Relay 1	Relay 2
2/26/2003 5:34:12 PM	Tank 1 Level	06	17.70	Feet	P1 On	P2 Off
2/26/2003 5:34:12 PM	Tank 2 Level	07	18.18	Feet	P3 Off	P4 Off
2/26/2003 5:34:12 PM	Tank 3 Level	08	20.54	Feet	P5 On	P6 Off
2/26/2003 5:34:12 PM	Tank 1 Temp	09	74	°F	Off	Off
2/26/2003 5:34:12 PM	Tank 2 Temp	10	72	°F	Off	Off
2/26/2003 5:34:12 PM	Tank 3 Temp	11	72	°F	Off	Off
2/26/2003 5:34:22 PM	Tank 1 Level	06	17.58	Feet	P1 On	P2 Off
2/26/2003 5:34:22 PM	Tank 2 Level	07	18.04	Feet	P3 Off	P4 Off
2/26/2003 5:34:22 PM	Tank 3 Level	08	19.79	Feet	P5 Off	P6 Off
2/26/2003 5:34:22 PM	Tank 1 Temp	09	74	°F	Off	Off
2/26/2003 5:34:22 PM	Tank 2 Temp	10	72	°F	Off	Off
2/26/2003 5:34:22 PM	Tank 3 Temp	11	72	°F	Off	Off
2/26/2003 5:34:32 PM	Tank 1 Level	06	16.47	Feet	P1 On	P2 Off
2/26/2003 5:34:32 PM	Tank 2 Level	07	16.87	Feet	P3 Off	P4 Off
2/26/2003 5:34:32 PM	Tank 3 Level	08	17.10	Feet	P5 Off	P6 Off
2/26/2003 5:34:32 PM	Tank 1 Temp	09	74	°F	Off	Off

Great for tank level monitoring!



## Programming

### Configure Input

- Input type
- Decimal point
- Temp units
- Sensor type

### Meter Scaling

- Scale input
- No cryptic codes
- Simple to use

### Set Relays/Alarms

- Select mode
- Set/reset points
- Fail-safe operation
- On & off delays

### Advanced Settings

- Password
- Filter & bypass
- Transmit delay
- Function type
- Cutoff value

### Calibration Reporting

Printed by MeterView<sup>®</sup>3.00 - Build 2060 Printed on 3/18/2003 3:45:28 PM  
PD765 Configuration - Meter #00

<b>Input Configuration</b> Input selected: 4 to 20 mA Decimal point: ddd.d Temperature unit: Degrees F Temperature sensor: Type J <b>Current Scaling (4-20 mA)</b> Input 1: 4.00 Display 1: 0.0 Input 2: 20.00 Display 2: 200.0 <b>Voltage Scaling (0-10 V)</b> Input 1: 0.00 Display 1: 0.0 Input 2: 10.00 Display 2: 50.0 <b>Relay/Alarm 1 Settings</b> Action: Automatic Reset Fail-safe: Off Set point: 40.0 On Delay: 0 Reset point: 10.0 Off Delay: 0 <b>Relay/Alarm 2 Settings</b> Action: Automatic Reset Fail-safe: Off Set point: 40.0 On Delay: 0 Reset point: 10.0 Off Delay: 0 <b>Display Response Variables</b> Adjustment: 0.0 Filter: 10 Bypass: 0.2 Transmit delay: 0	<b>Miscellaneous</b> Password: _____ Meter address: 00 Serial number: 200111201423430 <b>Factory Calibration Constants</b> Current gain: 0.0340963 Current offset: -0.1501465 Voltage gain: 0.0175513 Voltage offset: -1.0410160 Test gain: 0.0169000 Test offset: -0.0507000 TC Type J gain: 1.0454590 TC Type J offset: 6947.075 TC Type J C.J ref.: 34415.38 TC Type K gain: 1.0459060 TC Type K offset: 6910.510 TC Type K C.J ref.: 34463.38 TC Type T gain: 1.0452330 TC Type T offset: 6920.954 TC Type T C.J ref.: 34447.75 TC Type E gain: 1.0452550 TC Type E offset: 6951.981 TC Type E C.J ref.: 34443.00 RTD 100 Ohm PT (385) gain: 1.0422950 RTD 100 Ohm PT (385) offset: 6221.340 RTD 100 Ohm PT (392) gain: 1.0422950 RTD 100 Ohm PT (392) offset: 6221.340
---	---

## Data Acquisition

### Model PDA7503-1

Monitor one meter

### Model PDA7503-2

Monitor one to ten meters

### Model PDA7503-3

Monitor one to one hundred meters